

# SQUEEZE TRIGGER SCAN

## User Notes

This document explains how to get started using the SqueezeTrigger Scan inside OmniTrader. For more details on what SqueezeTrigger is and does, please visit [www.buyins.net](http://www.buyins.net).

Buyins.net maintains a database that collects, analyzes and publishes a proprietary SqueezeTrigger for each stock that has been shorted. The SqueezeTrigger database of nearly 950,000,000 short sale transactions goes back to January 1, 2005 and calculates the exact price at which the Total Short Interest is short in each stock.

SqueezeTrigger Scan is a subscription service offered by Nirvana Systems that delivers a list of stocks and their SqueezeTrigger values from Buyins.net to OmniTrader. In order to get the SqueezeTrigger Scan, you must subscribe to the actual data from Buyins.net as well as the SqueezeTrigger Scan from Nirvana Systems. If you do not subscribe to the SqueezeTrigger Scan and you would like more information, please contact Nirvana Sales or visit [www.buyins.net](http://www.buyins.net).

The SqueezeTrigger data is updated throughout the day. You will need to run your To Do List to get the latest data. The OmniTrader title bar displays the date and time you last downloaded SqueezeTrigger data, as shown.



Figure 1. Title Bar with Date and Time Information for Data Download

OmniTrader™, VisualTrader™, Adaptive Reasoning Model™, ARM™, ARM Knowledge Base™, Easy Data™, The Trading Game™, Focus List™, The Power to Trade with Confidence™, The Path to Trading Success™, The Trader's Advantage™, Pattern Tutor™, and Chart Pattern Recognition Module™ are trademarks of Nirvana Systems, Inc.

Product and company names mentioned herein are trademarks or trade names of their respective companies.

September 2006

# Subscribing to SqueezeTrigger Data & Scan

---

Before you can begin receiving the SqueezeTrigger Scan in OmniTrader, you must complete the following steps:

1. Subscribe to the data provided by Buyins.net by visiting [www.buyins.net](http://www.buyins.net) to set up your data account. You will be given a SqueezeTrigger ID and password, which you will use to register the product later.
2. Subscribe to the premium subscription for SqueezeTrigger Scan by contacting Nirvana Sales Team.
3. Visit the registration page at [www.nirvanasystems.com/nirvana/squeezetrigger/index.asp](http://www.nirvanasystems.com/nirvana/squeezetrigger/index.asp) for SqueezeTrigger and input your information.

Please enter your login information to complete the process for automating SqueezeTrigger in OmniScan for OmniTrader.

---

Nirvana ID:

Nirvana Password:

SqueezeTrigger ID:

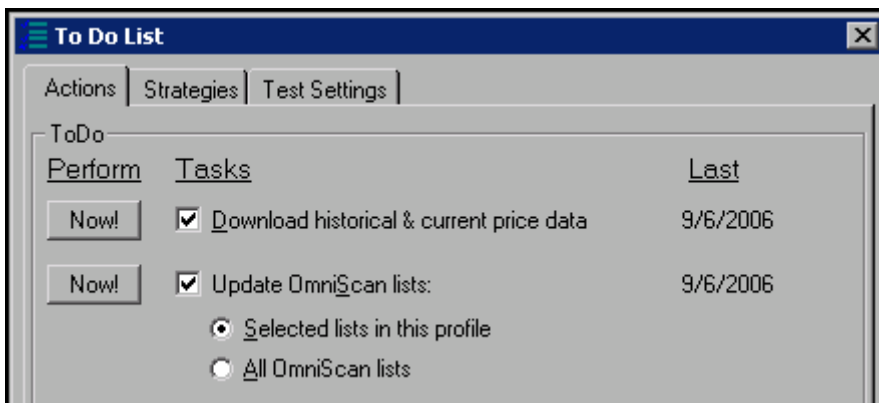
SqueezeTrigger Password:

[Forgot your Nirvana ID or Nirvana Password?](#)

**Figure 2.** SqueezeTrigger Registration

# Receiving SqueezeTrigger Scan

Once you have subscribed to SqueezeTrigger Scan, you can begin downloading data. In order to have the latest data delivered to OmniTrader, simply enable **Download Historical and Current Price Data** and **Update OmniScan Lists** in your To Do List. When you click the **Perform Selected Tasks** button, OmniTrader will update your scans. When the process is complete, you will see the latest SqueezeTrigger Scan in OmniScan.



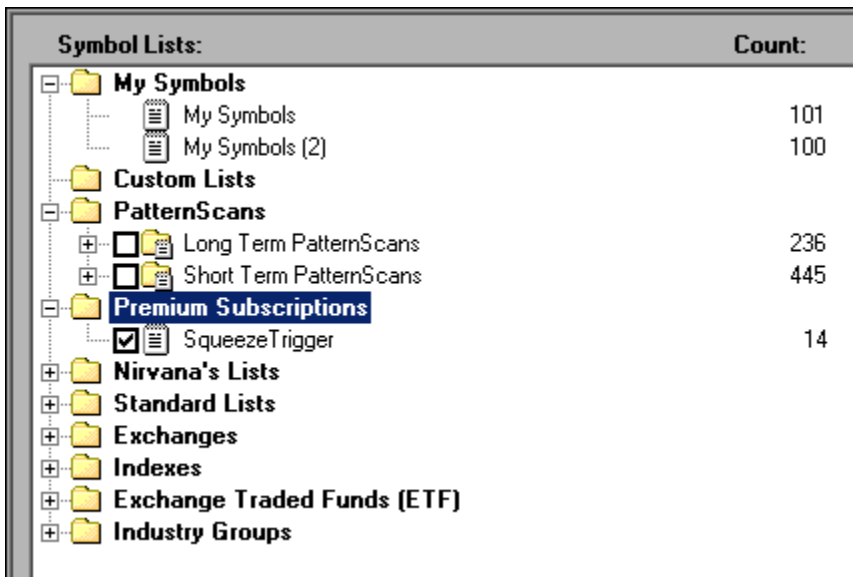
**Figure 3.** To Do List Options to Update SqueezeTrigger Scan



**Note** The SqueezeTrigger Scan is accessed through the OmniScan window, so you must have OmniScan installed in order to activate these lists. If you do not have OmniScan, please contact the Nirvana Sales team.

# Activating SqueezeTrigger Scan

To activate the SqueezeTrigger Scan list, click on the **Edit** (pencil) icon at the top of your Focus List to open the OmniScan window.



The screenshot shows a tree view of symbol lists in OmniScan. The 'Premium Subscriptions' folder is selected, and the 'SqueezeTrigger' list is checked. The 'Count' column shows 14 for SqueezeTrigger.

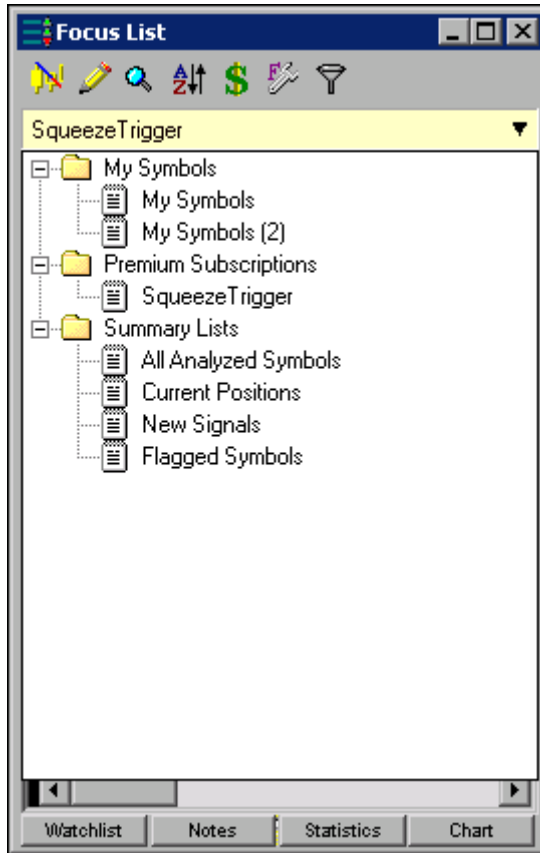
Symbol Lists:	Count:
My Symbols	
My Symbols	101
My Symbols (2)	100
Custom Lists	
PatternScans	
Long Term PatternScans	236
Short Term PatternScans	445
Premium Subscriptions	
SqueezeTrigger	14
Nirvana's Lists	
Standard Lists	
Exchanges	
Indexes	
Exchange Traded Funds (ETF)	
Industry Groups	

Figure 4. SqueezeTrigger Scan Lists in OmniScan

You will see the SqueezeTrigger list in the Premium Subscriptions folder in the Symbol Lists section. The number of stocks found in the latest scan is shown in the Count column at the right. Simply enable the checkbox next to the SqueezeTrigger list to activate it.

# Accessing SqueezeTrigger Scan

Once you have activated the SqueezeTrigger Scan list, you can display the list in your Focus List. Click on the Scan Menu at the top of your Focus List to see the lists you have enabled. Click on the SqueezeTrigger list to view the SqueezeTrigger stocks found.

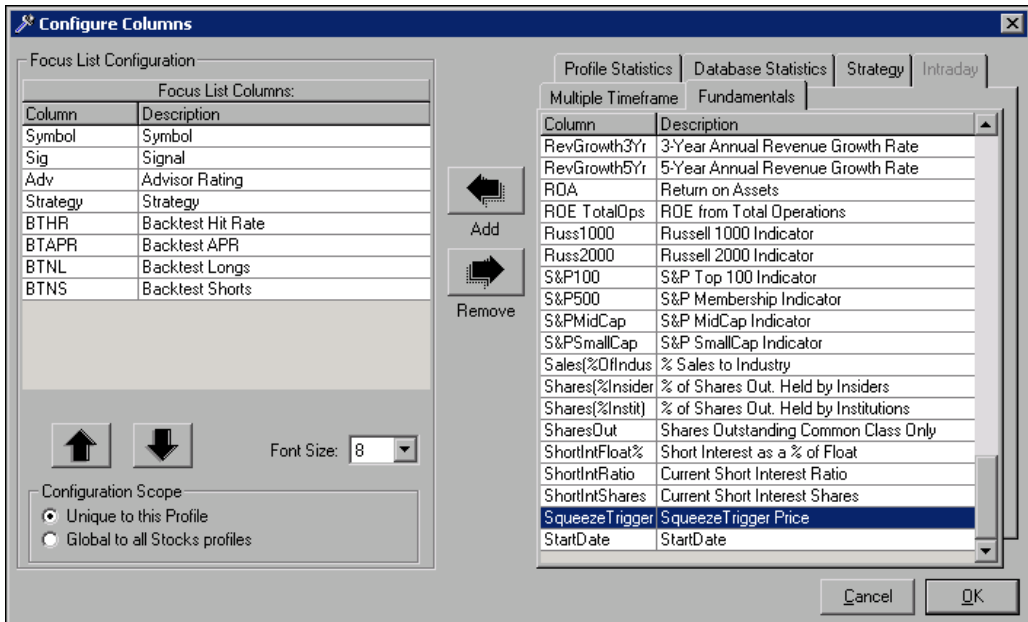


**Figure 5.** Focus List with SqueezeTrigger Scan in the Scan Menu

# Adding SqueezeTrigger Statistics to the Focus List

You can use the Configure Columns dialog box to add, remove, and re-order the columns in the Focus List. To add the SqueezeTrigger column to the Focus List, complete the following steps:

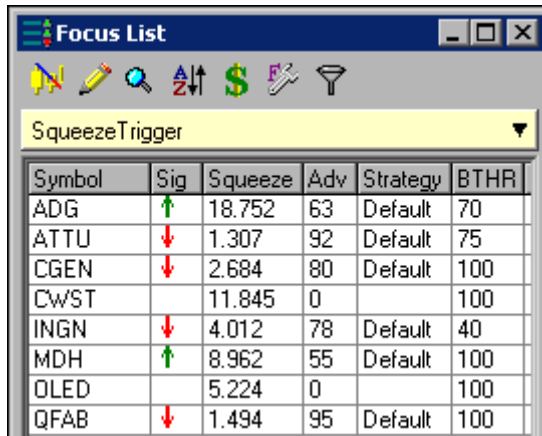
1. Click on the **Configure List** (wrench) icon at the top of your Focus List or right-click in the Focus List and select **Configure Grid** from the menu.
2. On the Configure Columns dialog box, select the **Fundamentals** tab.
3. Highlight the SqueezeTrigger entry and click the **Add** arrow.



**Figure 6.** Configure Columns Dialog Box with SqueezeTrigger Entry Selected

4. Use the **Up** and **Down** arrows to modify the position of the column in your Focus List.

5. Click **OK** to add the column to your Focus List.



The screenshot shows a window titled "Focus List" with a toolbar containing icons for a chart, pencil, magnifying glass, up/down arrows, dollar sign, and funnel. Below the toolbar is a dropdown menu with "SqueezeTrigger" selected and highlighted in yellow. Below the dropdown is a table with the following data:

Symbol	Sig	Squeeze	Adv	Strategy	BTHR
ADG	↑	18.752	63	Default	70
ATTU	↓	1.307	92	Default	75
CGEN	↓	2.684	80	Default	100
CWST		11.845	0		100
INGN	↓	4.012	78	Default	40
MDH	↑	8.962	55	Default	100
OLED		5.224	0		100
QFAB	↓	1.494	95	Default	100

**Figure 7.** Focus List with SqueezeTrigger Column Added